

41st Sustainable Shared Growth Seminar

PERMACULTURE and TRANSITION TOWNS

PERMA
GARDEN
FOR
sustainable
development
Goals

MAY
2024

A seminar by

Sekiguchi Global Research Association of the
Atsumi International Foundation (SGRA)
in collaboration with

Faculty of Management and Development Studies
(FMDS) of the University of the Philippines Open
University (UPOU); College of Public Affairs and
Development (CPAf) of the University of the
Philippines (UPLB)





TABLE OF CONTENTS

- 01** Introduction
- 03** Program
- 04** Opening Remarks: Junko Imanishi,
Chief Representative, SGRA/AISF
- 07** Presentation 1: Mr. Kiyozaku Shidara,
Japanese Permaculture Association,
Fujino, Japan
- 14** Presentation 2 : Dr. Jabez Flores,
Maahas, Philippines
(FMDS/UPOU)
- 20** Discussion : Dean Dr. Joane Serrano
(FMDS/UPOU)



TABLE OF CONTENTS

- 25** Discussion : Dr. Max Maquito
(CPAf/UPLB, SGRA/AISF)
- 30** Closing Remarks: Prof. Ces Luna
(FMDS/UPOU)
- 31** Gallery
- 35** Next Step
- 36** Acknowledgements

ACRONYM	FULL NAME
FMDS	Faculty of Management and Development Studies
UPOU	University of the Philippines Open University
CPAf	College of Public Affairs and Development
UPLB	University of the Philippines Los Baños
SGRA	Sekiguchi Global Research Association
AISF	Atsumi International Foundation

41st Sustainable Shared Growth Seminar Permaculture and Transition Towns

May 8, 2024 (0900-1200 Ph TIME)

HYBRID (UPOU+ZOOM)

FMDS/UPOU, CPAf/UPLB, SGRA/AISF

Presenter from Fujino, Japan

MR. KIYOKAZU SHIDARA

JAPANESE PERMACULTURE ASSOCIATION

Presenter from Maahas, Philippines

DR. JABEZ FLORES

FMDS/UPOU

DISCUSSANT

DR. JOANE SERRANO

FMDS/UPOU

DISCUSSANT

DR. MAX MAQUITO

CPAf/UPLB

Online Registration:

URL Link or QR Code

<https://tinyurl.com/41stKKK>

- open to the public
- free of charge
- first come first serve
- limited slots
- no live streaming



INTRODUCTION

MAY 08, 2024

Permaculture and Transition Towns

KKK SEMINAR #41

Transition towns signify a movement for relocalization and resilience. It is but natural that permaculture (permanent agriculture) has been an integral part of this movement since its inception and throughout its implementation. The Permaculture Research Institute gives us the following elaboration of transition towns.

One of the defining aims of a typical Transition Town (or Transition Initiative, as they are also known) is to relocalise and decarbonise the economy, in order to become less dependent on the globalised, oil-dependent economy. This involves coming together as a community with the ambitious, long-term goal of using mostly local resources to meet local needs.

Rather than mindlessly embracing consumerism, participants in Transition Towns are stepping out of the rat race, reimagining 'the good life,' and discovering that community engagement provides great wealth to those brave enough to get involved.

As well as relocalisation, another key concept in the Transition movement is 'resilience.' This refers to the ability of an individual or community to withstand societal or ecological shocks – shocks that can be expected in the future, sooner rather than later, if we continue down the path of growth without limits. In order to become more resilient, communities need to relearn how to provide for themselves in ways that were commonplace not so long ago.

INTRODUCTION

MAY 08, 2024

Permaculture and Transition Towns

KKK SEMINAR #41

This might involve sharing more of our assets with neighbours, rather than each individual having their own. Or it might involve 're-skilling' ourselves to acquire the lost arts of mending clothes, preserving food, or entertaining ourselves for free. Fortunately, this path to sustainability and resilience is filled with hidden joys and unexpected delights, in ways that perhaps need to be experienced to be fully understood.

In its addressing current economic, social, and ecological challenges, this seminar's topic is therefore very much aligned with the transition to sustainability thrust of FMDS/UPOU as well as the overarching theme of sustainable shared growth.



PROGRAM

OPENING REMARKS

JUNKO IMANISHI

Chief Representative, Sekiguchi Global Research Association
Atsumi International Foundation

PRESENTATION

- **PRESENTATION 1 | “THE CASE OF FUJINO, SAGAMIHARA CITY, KANAGAWA
PREFECTURE, JAPAN”**

Mr. Kiyokazu Shidara

- **PRESENTATION 2 | “THE CASE OF MAAHAS, LOS BAÑOS, LAGUNA,
PHILIPPINES”**

Dr. Jabez Joshua Flores (FMDS/UPOU)

DISCUSSION

- Dr. Joane Serrano (FMDS/UPOU)
- Dr. Max Maquito (CPAf/UPLB, SGRA/AISF)

CLOSING REMARKS

PROF. CESAR LUNA

Program Chair, FMDS/UPOU

MODERATOR

MS. DONA LYN PIAMONTE



University Extension Associate, FMDS/UPOU

OPENING REMARKS: JUNKO IMANISHI

CHIEF REPRESENTATIVE, SGRA/AISF

Konnichi wa!

Today's seminar marks another milestone in the sustainable shared growth research and advocacy of the Sekiguchi Global Research Association of the Atsumi International Foundation. As in the previous Japanese fiscal year, we are delighted to be collaborating again with the Faculty of Management and Development Studies of the University of the Philippines Open University (FMDS/UPOU), as well as the College of Public Affairs and development of the University of the Philippines Los Baños

In this seminar, we bring together two towns that essentially met each other through their representatives last November, when the community currency team of FMDS/UPOU, the alitaptap or A-team from the town of Maahas, Los Baños met with members of Fujino, a town in Sagami-hara City, Kanagawa Prefecture, about two hours by train West of Tokyo. The A-Team then just concluded their presentation on the alitaptap pilot study at the 7th East Asian Consortium of Japan Studies held at the Tokyo University of Foreign Studies.

**“another
milestone in the
sustainable
shared growth
research and
advocacy of the
Sekiguchi Global
Research
Association of the
Atsumi
International
Foundation”**



OPENING REMARKS: JUNKO IMANISHI

CHIEF REPRESENTATIVE, SGRA/AISF

Fujino apparently is the first Transition Town in Japan and is also the model for the alitaptap community currency. In today's seminar, however, we will focus on two other aspects of Fujino that are very much related to community currency, but are also high priority aspects of the town of Maahas, or at least FMDS/UPOU, which is an important member of the Maahas community. These two aspects are permaculture and transition towns.

We are very grateful to Shidara Kiyokazu san and Dr. Jabez Flores for taking the time to share their town's experience in these two concepts. We hope that exchanges, including today's seminar, would bring the two communities closer together.

Today's seminar is, I think, a milestone because it extends the community currency research and advocacy one step further. We are now looking at how two communities that share the same vision could connect across national boundaries, and move together forward in realizing this vision. At the same time, it is my hope that there could be more such initiatives in Japan, and the Philippines as well. In small but important ways, local communities could contribute to integrating nations.

**“In this seminar,
we bring
together two
towns that
essentially met
each other
through their
representatives
last November”**



OPENING REMARKS: JUNKO IMANISHI CHIEF REPRESENTATIVE, SGRA/AISF 未来会議

Thanks again to Dean Joane Serrano (ジョアン・セラノ), Prof. Cesar Luna (セサル・ルナ), and their active team for this continuing partnership. I hope you will enjoy today's seminar that they have prepared for you.

どうも
ありがとうございます
Many Thanks!



Tokyo Visit, Fall of 2023

Presentation 1

THE CASE OF FUJINO, SAGAMIHARA CITY, KANAGAWA PREFECTURE, JAPAN

Mr. KIYOKAZU SHIDARA (JAPANESE PERMACULTURE ASSOCIATION)



Fujino is a town located between Tokyo, the biggest city in the world and Mt. Fuji, the tallest mountain in Japan.

Presentation 1

THE CASE OF FUJINO, SAGAMIHARA CITY, KANAGAWA PREFECTURE, JAPAN

Mr. KIYOKAZU SHIDARA (JAPANESE PERMACULTURE ASSOCIATION)



Presentation 1

THE CASE OF FUJINO, SAGAMIHARA CITY, KANAGAWA PREFECTURE, JAPAN

Mr. KIYOKAZU SHIDARA (JAPANESE PERMACULTURE ASSOCIATION)



Art Town Fujino

- During the Second World War, numerous artists evacuated into Fujino from Tokyo targeted by US Force.
- Since then, because of the ideal location for art creation, a lot of artists moved to Fujino and their works situated among forests attracted lot of people interested in art and nature.
- Fujino government at that time decided to support artists to identify the town as a modern art collective connected to local environment and culture by subsidizing them .

Presentation 1

THE CASE OF FUJINO, SAGAMIHARA CITY, KANAGAWA PREFECTURE, JAPAN

Mr. KIYOKAZU SHIDARA (JAPANESE PERMACULTURE ASSOCIATION)

Art Movements

Art Festival



More than 2 hundred artists live in Fujino town.



Art events connected to local traditional festivals

Ceramic festivals



Presentation 1

THE CASE OF FUJINO, SAGAMIHARA CITY, KANAGAWA PREFECTURE, JAPAN

Mr. KIYOKAZU SHIDARA (JAPANESE PERMACULTURE ASSOCIATION)

New International Social movements introduced to Fujino

Permaculture



Permaculture Center of Japan initiated in 1996 in Fujino

Steiner School



First Steiner School was established in 2004 in Fujino

More than 100 people attracted by Permaculture and Steiner education moved to Fujino in total.

Presentation 1

THE CASE OF FUJINO, SAGAMIHARA CITY, KANAGAWA PREFECTURE, JAPAN

Mr. KIYOKAZU SHIDARA (JAPANESE PERMACULTURE ASSOCIATION)

TransitionTown Movement in Fujino



Presentation 1

THE CASE OF FUJINO, SAGAMIHARA CITY, KANAGAWA PREFECTURE, JAPAN

Mr. KIYOKAZU SHIDARA (JAPANESE PERMACULTURE ASSOCIATION)

Mr. Kiyokazu Shidara ((JAPANESE PERMACULTURE ASSOCIATION)

PRESENTOR



Kiyokazu Shidara. Chief Representative of NPO Permaculture Center Japan (PCCJ). After working in agriculture in Niigata for four years, he moved to the U.S. to study environmental anthropology. After returning to Japan, he founded PCCJ in 1990 in Fujino, Kanagawa Prefecture, to establish a Japanese model of permaculture. Currently, his main activities are focused on educational projects to promote permaculture within Japan. Permaculture tutoring sessions are held throughout the year.

FB: Kiyokazu Shidara

Online Interview Article: "Permaculture Center Japan spreading wisdom for sustainable living" by Sonoka Imagawa in Zenbird (April 20, 2022)

wisdom for sustainable living" by Sonoka Imagawa in Zenbird (April 20, 2022)

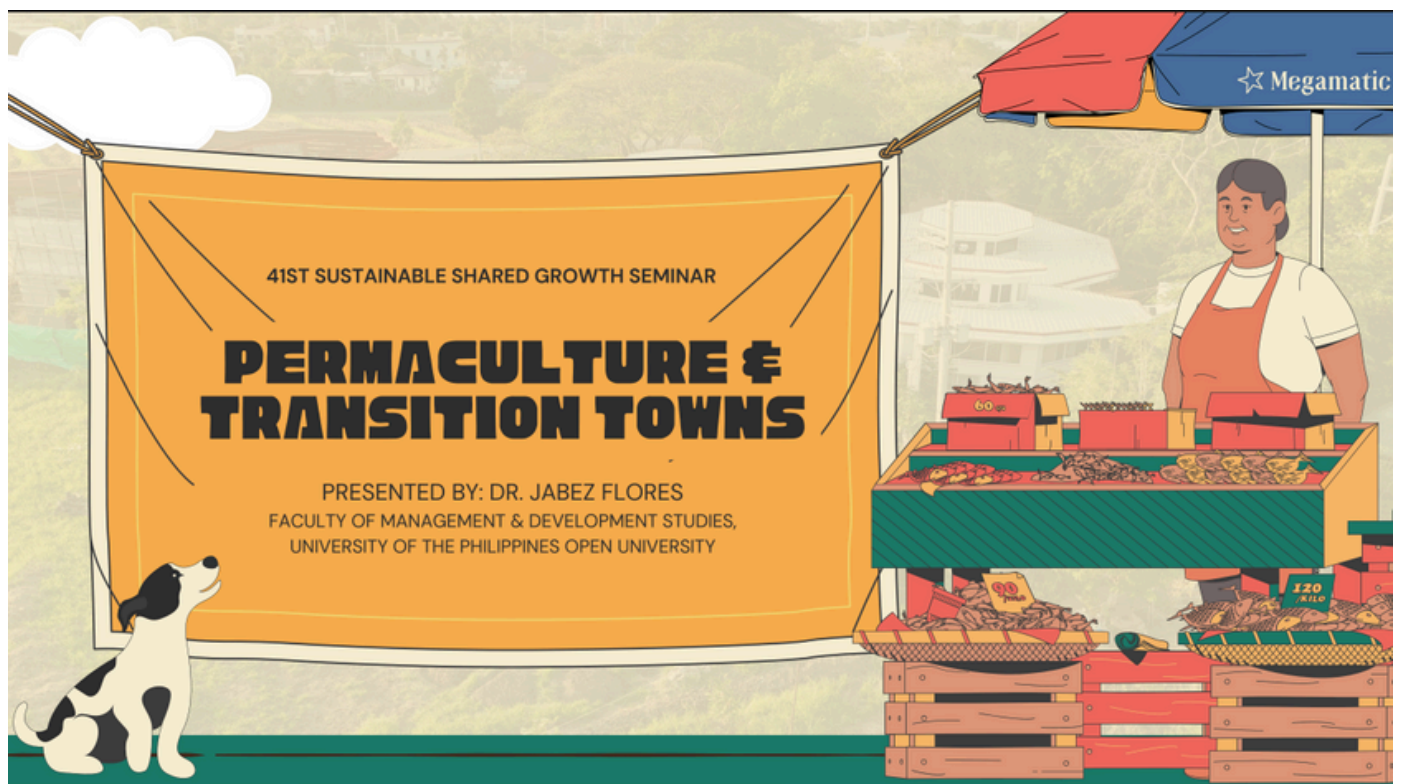
DISCLAIMER

The opinions expressed in the presentations are solely those of the authors. They do not purport to reflect the views or opinions of the institutions with which the authors are affiliated.

Presentation 2

THE CASE OF MAAHAS, LOS BAÑOS, LAGUNA, PHILIPPINES

Dr. Jabez Joshua Flores (FMDS/UPOU)



Presentation 2

THE CASE OF MAAHAS, LOS BAÑOS, LAGUNA, PHILIPPINES

Dr. Jabez Joshua Flores (FMDS/UPOU)

TOPIC OUTLINE



THE DESIGN CONCEPT



OUR PROGRESS



THE FUTURE



DESIGN WITH NATURE

Integrates with local ecosystems via wildlife corridors

The garden not only benefits the immediate community but the **larger landscape** as well. It enhances the existing tree corridor that connects the UPOU campus to Mt. Makiling--an ASEAN heritage national park and biodiversity hotspot.



Presentation 2

THE CASE OF MAAHAS, LOS BAÑOS, LAGUNA, PHILIPPINES

Dr. Jabez Joshua Flores
(FMDS/UPOU)



ADDRESS SDG 2

FMDS Perma GARDEN

G-rowing A-ppreciation toward R-esilience, D-evelopment,
E-ntrepreneurship, and N-utrition

The garden was proposed by the Dean of FMDS,
Dr. Joane Serrano, in 2022.
Scoping and planning began in September 29, 2022.

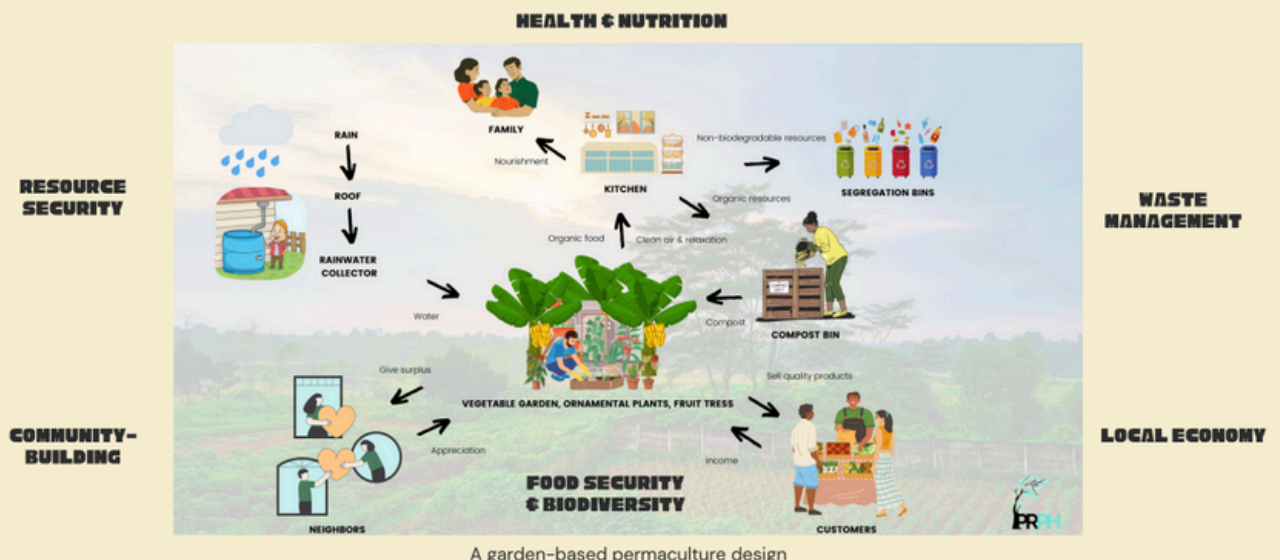
Functions:

- To provide fresh produce to the faculty and staff of UPOU
- To serve as a learning laboratory for the **Permaculture Systems Design Thinking** course, **Doctor of Sustainability** program, and all related programs in UPOU.



A TRANSITION TOWN MODEL

Based on permaculture principles, the GARDEN was designed to be at the forefront of a well-integrated system that will provide goods and services to the UPOU community and its partners.



Presentation 2

THE CASE OF MAAHAS, LOS BAÑOS, LAGUNA, PHILIPPINES

Dr. Jabez Joshua Flores (FMDS/UPOU)



BEFORE & AFTER

FROM IDLE TO PRODUCTIVE

In less than a year, the 200-square meter vacant space has transformed into a thriving ecosystem.

IN 2024

GROWTH OF AN INITIATIVE

The garden has grown to 2,000 square meters of productive land with the participation of more people.



ACTIVITIES & RESEARCH

- Adopt-a-Plot Program
- Community Currency
- Crops & Crafts Store
- Biodiversity Survey
- Birdwatching
- Educational Tours
- Perma Library
- Drone Mapping and Monitoring
- Rainwater Harvesting





Presentation 2

THE CASE OF MAAHAS, LOS BAÑOS, LAGUNA, PHILIPPINES

Dr. Jabez Joshua Flores (FMDS/UPOU)

NETWORK

- with other barangays
- with local businesses
- with organizations



EDUCATION & ADVOCACY

- for other barangays
- for local businesses
- for organizations



CALL TO ACTION

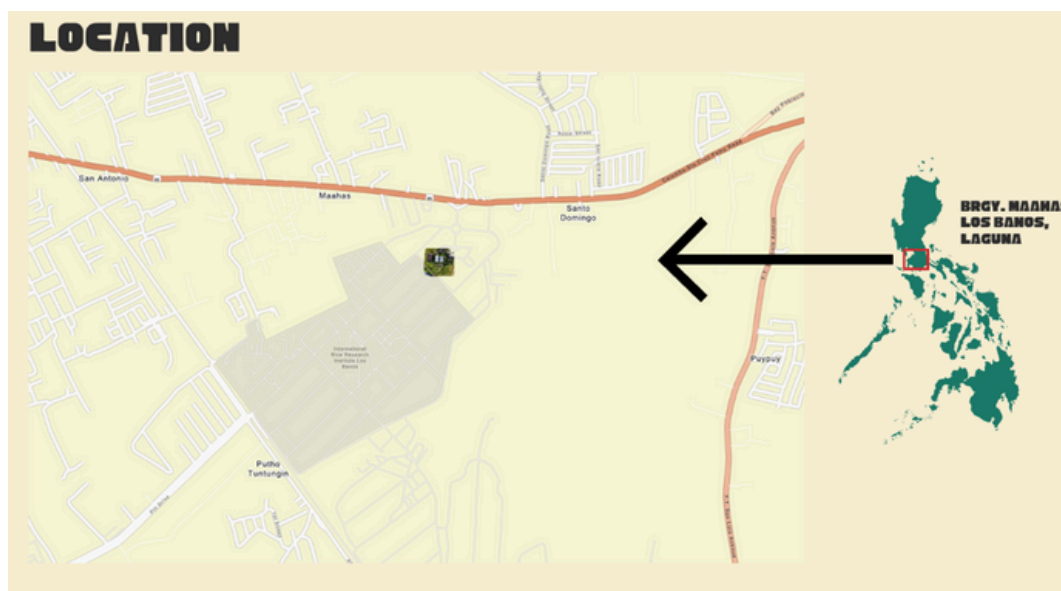
"Our future designs *must work in harmony with, and not against nature*, and rather than being the "dominant species" humans must become universal facilitators ("Earth stewards"), protecting and encouraging biodiversity across the world."

Rhodes, 2015

Presentation 2

THE CASE OF MAAHAS, LOS BAÑOS, LAGUNA, PHILIPPINES

Dr. Jabez Joshua Flores (FMDS/UPOU)



Dr. Jabez Joshua Flores (FMDS/UPOU)

PRESENTOR



Jabez Joshua M. Flores is a graduate of Bachelor of Arts in Sociology in UP Los Baños, Master of Environment and Natural Resources Management major in upland resources management in UP Open University, and Doctor of Philosophy in Environmental Science with a cognate in Development Communication in UPLB. He was a DOST-SEI graduate scholar and a SEARCA PhD Research Scholar. Jabez was also a former board member of the Philippine Permaculture Association and a current member of the International Association for Landscape Ecology-Europe. He started "Permaculture Research PH" as a research initiative together with his friends and of Canada, Accredited Appraiser Canadian Institute" of the AIC and the colleagues from his university. His research interests include agroecology, landscape ecology, GIS and drone photography, network science, and environmental communication. Currently, he works as a Senior Lecturer for UP Open University and UP Rural High School

Email: jabezjoshua.flores@upou.edu.ph

DISCLAIMER

The opinions expressed in the presentations are solely those of the authors. They do not purport to reflect the views or opinions of the institutions with which the authors are affiliated.

Discussion

- Dr. Joane Serrano (FMDS/UPOU)



Thank you Dr. Jabez and Shidara Sensein for sharing your presentation on permaculture and transition towns, cases of Los Banos and Fujino.

As someone who is passionate about sustainability and both the concepts of permaculture and transition towns are closely linked to sustainability, I'm excited to share my insights on the ideas presented.

Dr. Jabez' presentation which revolves around the design concept, the actual implementation of the Permaculture garden as well as monitoring its progress, and the future initiatives is quite clear and logically sequenced. He started his presentation with the vision for a transition town, although his focus is not really the entire town but just the Barangay Maahas which is just one of the 14 barangays in Los Baños, Laguna, Philippines. His presentation that Barangay Maahas is part of the larger ecosystem of Mt. Makiling is important to set the premise for a micro ecosystem influenced by a macro ecosystem. As Dr. Jabez shared, I'm part of the proponent of the FMDS Perma GARDEN so I'm really

Discussion

- Dr. Joane Serrano (FMDS/UPOU)

biased to all its advantages when it comes to biodiversity conservation, climate change mitigation, and the larger discourse on sustainability. One aspect that is worth highlighting is Dr. Jabez' discussion of how the Permaculture garden is designed with nature and how it mimics how nature behaves. It is also important to highlight Dr. Jabez' discussion on how the Perma garden does not just benefit the immediate community but also the larger landscape as it enhances the existing tree corridor that connects UPOU to Mt. Makiling. The mention of the tree corridor connecting the UPOU campus to Mt. Makiling suggests an existing natural pathway that supports biodiversity and ecological connectivity. And through the application of permaculture principles such as planting diverse vegetation, fostering soil health, and promoting biodiversity, the permaculture garden contributes to the overall health and resilience of the landscape. I particularly like the idea of learning together as the garden provides social, cultural and educational functions. The model that Dr. Jabez presented for a transition town encompasses the elements of sustainability which integrates the economic, social and environmental dimensions. If I were to evaluate it from the perspective of sustainability with the following key principles: in terms of inclusiveness (no one will be left behind), I would say it is inclusive as it includes individuals, family members, and community members; in terms of universality, it can be applied to any types of community; in terms of diversity, it targets all sectors; in terms of integration, it integrates all dimensions; in terms of action orientedness, there are very concrete actions that were implemented; but in terms of partnerships, I think this is where the model needs further refinement as it lacks engagement of multi-stakeholders, i.e local government units, NGOs, and other stakeholders in a community. In terms of implementation and progress, the presentation clearly shows how all activities in the permaculture garden are documented and monitored with various kinds of research initiatives to further improve the perma garden and to learn more how permaculture can contribute further to sustainable development.

Discussion

- Dr. Joane Serrano (FMDS/UPOU)

The discussion regarding the future of the perma garden addressed the gap that I observed in terms of partnership. The call to action is important since the notion of sustainability can only be achieved through concrete actions from stakeholders of a community.

Now let me share my insights on the Fujino town. I'm just quite happy to share that I'm lucky enough to get a chance to see for myself how beautiful the town of Fujino is.

We have seen in Shirada Sensei's presentation the beauty of the natural landscape of Fujino. Let me just point out the similarity between Maahas and actually the entire town of Los Banos with Fujino as they are both parts of a larger landscape - Mt. Makiling and Mt. Fuji. While geographically and ecologically distinct, both mountains share similarities in terms of supporting rich biodiversity.

Both towns are also similar in terms of geographical distance from a major city. Los Banos quite near and accessible to Metro Manila, and Fujino quite near and accessible to Tokyo. Shirada Sensei presented three major elements of a transition town. As an arts town, the presence of Steiner school, and the permaculture.

The focus on Fujio as an art town is worth noting. In the literature, the concept of transition town focuses on increasing self-sufficiency, resiliency and social justice. So the inclusion of arts is important as it shows the relationship between human with nature as well as promotes cultural preservation and social cohesion through

The highlight on Steiner school, an educational approach that allows students to connect with nature and explore and discover the natural world, is also worth noting.

Discussion

- Dr. Joane Serrano (FMDS/UPOU)



I believe that for a transition town to be achieved, it is important to begin with the children. If children can develop a sense of wonder and curiosity on how nature works, then this notion of caring for nature will stay with them throughout their lives.

It is worth highlighting that Fujino's permaculture was started with the help of the local government. Our team was able to visit the Permaculture Center of Japan which Shirada Sensei talked about. He shared in his presentation how they used an old house and rehabilitated old furniture and materials, and used natural resources from their local environment such as when heating the house. This is inline with one of the principles of permaculture which is no waste.

Shirada sensei shared that the permaculture center of Japan is part of a bigger movement towards a sustainable society. His highlight on the importance of training and education resonates with the vision of UPOU on the importance of education in transitioning towards sustainability.

He also shared about the solar company which we have visited. Which again is in line with the use of and value renewable resources and services.

Let me just end by saying thank you to both presenters for your very insightful presentation and very beautiful pictures that I'm sure our audience are now excited to see physically both towns.



Discussion

- Dr. Joane Serrano (FMDS/UPOU)



Joane V. Serrano, PhD, is a professor of the University of the Philippines Open University (UPOU). She serves as the current Dean of the Faculty of Management and Development Studies. She obtained her Bachelor of Science in Development Communication, Master of Management Major in Development Management, and Doctor of Philosophy Major in Development Management, and Doctor of Philosophy Major in Development Communication from the University of the Philippines Los Baños. She teaches Environmental Advocacy, Communication of Scientific and Technical Information, and Socio-Cultural Perspectives on the Environment.

She has a wide array of research interests including sustainability, socio-cultural perspectives on the environment, development and environmental communication, health promotion, gender and indigenous knowledge, and open and distance eLearning (ODEL). She is currently the editor in chief of the UPOU-managed Journal of Management and Development Studies. She has published more than 30 publications, presented in 90 conferences, and more than 60 public service engagements. Her recent international engagements are Won by Walking Network initiated by University of Gothenburg, University of Plymouth, Abo Akademi, University of Oulu funded by Riksbanken Jubileumsfond; Digital Trust and Intuition with focus on Sustainability with Ostfalia University, and Satoyama Initiatives with International Partnership for Satoyama Initiatives and Satoyama Development Mechanism. As part of her commitment to lifelong learning and sustainability, Dr. Serrano continues to find ways of discovering innovations that will help improve education and research practices in the Philippines.

E-Mail: jserrano@upou.edu.ph

DISCLAIMER

The opinions expressed in the presentations are solely those of the authors. They do not purport to reflect the views or opinions of the institutions with which the authors are affiliated.

Discussion: A Tale of 2 Towns

- Dr. Max Maquito (CPAf/UPLB, SGRA/AISF)



POINT OF COMPARISON	FUJINO	MAAHAS
TOWN	FUJINO (old name), Sagamihara City, Kanagawa Prefecture, Japan (Pop. approx. 10,000)	MAAHAS, Los Baños, Laguna, Philippines (Pop. approx. 9,000)
INITIATIVE	Transition Town	Sustainability in Action - a Living Laboratory Campus (SiALLC)
CORE	Mr. Hide Enomoto (just moved into Fujino) and friends	Dr. Joane Serrano and FMDS/UPOU faculty and staff

Discussion: A Tale of 2 Towns

- Dr. Max Maquito (CPAf/UPLB, SGRA/AISF)

POINT OF COMPARISON	FUJINO	MAAHAS
VISION	Citizens living in the same area, connected by a relationship of ``connections that benefit each other," stimulate each other's creativity and enhance the underlying strength of the area, thereby ``transitioning" society to a sustainable one*	Positioning UPOU as a center for sustainability studies UPOU can offer a unique learning environment where students, faculty, and community members can collaboratively explore and implement innovative solutions to sustainability challenges.
BASE (ENTRY POINT)	Permaculture Association of Japan	Permaculture Design → Perma GARDEN
BASIC ELEMENTS	Working Groups	Components
BASIC ELEMENT #1	Fujino Community Currency Working Group: Yorozu	UPOU Community Currency Component: Alitaptap

Discussion: A Tale of 2 Towns

- Dr. Max Maquito (CPAf/UPLB, SGRA/AISF)

POINT OF COMPARISON	FUJINO	MAAHAS
BASIC ELEMENT #2	Fujino Denryoku Working Group: self reliance in energy supply (solar + EKO battery); efficient consumption	Sustainable Campus Infrastructure Component: Rainwater Harvesting; Waste Management Systems; Energy Efficiency Measures (incl. Solar)
BASIC ELEMENT #3	Forest Working Group: activities on taking care of the forest	Integration with the LUDIP Component: tree corridor to Mt. Makiling
BASIC ELEMENT #4	Health and Medical Working Group	Healthy University Component (% wellness and healthy lifestyle committee)
BASIC ELEMENT #5	Hyakusho (Farmers) Club Working Group: Food self-sufficiency; Inheritance of native and fixed species;; Coexistence and utilization with biological resources;	No equivalent component. The permaculture component is limited to garden scale, but UPOU is in a predominantly agricultural area and academic environment

Discussion: A Tale of 2 Towns

- Dr. Max Maquito (CPAf/UPLB, SGRA/AISF)

POINT OF COMPARISON	FUJINO	MAAHAS
BASIC ELEMENT #6	Communication Working Group: connects everyone, based on elements such as information dissemination, information organization, and interaction (events)	SMART and Digital Technology Component: IoT (Internet of Things) devices for real-time monitoring and management of energy, water, and other resources; UPOU's various digital platforms; Micro-credentialing systems
BASIC ELEMENT #7	Work and Economy Working Group: looks at local resources, think about a visible economy, and create jobs in this town	Experiential Learning and Research Spaces Component: Opening opportunities for entrepreneurship and through experiential learning
BASIC ELEMENT #8	No equivalent Working Group ? but Fujino is an "ART TOWN"- a lot of artists moved to Fujino and their works situated among forests attracted lot of people interested in art and nature.	Arts, Culture, and Humanities Component

Discussion: A Tale of 2 Towns

• Dr. Max Maquito (CPAf/UPLB, SGRA/AISF)

POINT OF COMPARISON	FUJINO	MAAHAS
BASIC ELEMENT #9	No equivalent Working Group	Partnerships and Collaborations Component: share expertise, best practices, and lessons learned insustainability-related fields, fostering mutual learning and skill development → Local-to-Local Across Border Schemes (LLABS)

Dr. Max Maquito (CPAf/UPLB, SGRA/AISF)

PRESENTER



In his "previous life", Dr. Ferdinand C. Maquito (nickname: Max) was a mechanical engineer at a state-owned shipyard, after finishing his BS at the Engineering Department of the University of the Philippines, Diliman. A scholarship enabled him to shift specialization and earn his MS Industrial Economics from the Center of Research of Communication (now within the University of Asia and the Pacific). Right after which, he was able to get into the Japanese Ministry of Education scholarship to get into the PhD in Economics program of the University of Tokyo. A scholarship from the Atsumi International Foundation enabled him to finish his doctorate in Economics. Even while living in Japan, he regularly organized shared growth seminars in the Philippines with the collaboration of various institutions. He was an Adjunct Professor in Temple University Japan campus, before coming back to

the Philippines to join CPAf, where he is now an Assistant Professor, hoping to spend, more fully, his remaining professional years for the service of his country. His long stay in Japan, and working with the Sekiguchi Global Research Association of the Atsumi International Foundation have fueled his lifelong research and advocacy on sustainable shared growth.

E-Mail: maquito.uplb@gmail.com

DISCLAIMER

The opinions expressed in the presentations are solely those of the authors. They do not purport to reflect the views or opinions of the institutions with which the authors are affiliated.

CLOSING REMARKS

Prof. Ces Luna (FMDS/UPOU)



I think everyone will agree that we've had quite a productive morning session with all the questions that were raised and we are really glad that this is how it turned out and we are encouraged by this interest in permaculture as well as related initiatives of the FMDS Community Currency and that sort of thing. Again, we've already thanked the speakers but I just want to thank them as well as the leadership in FMDS for supporting this. I am quite sure that you know this might not look like a very important thing but it is a start and I am quite sure that as we succeed with this endeavour we'll get to the point where we would be ready to replicate this in other areas to share what we have learned. So, on behalf of all the people who made this happen, I formally close today's session. Thank you.

Prof. Cesar Luna (FMDS/UPOU)



Cesar Z. Luna is the Chair of the Diploma in and Master of Land Valuation and Management Program of the University of the Philippines Open University, where he teaches online courses in mass appraisal and real estate investment. He also serves as the Assistant to the Vice Chancellor for Finance and Administration and as the Head of the Campus Development and Maintenance Office.

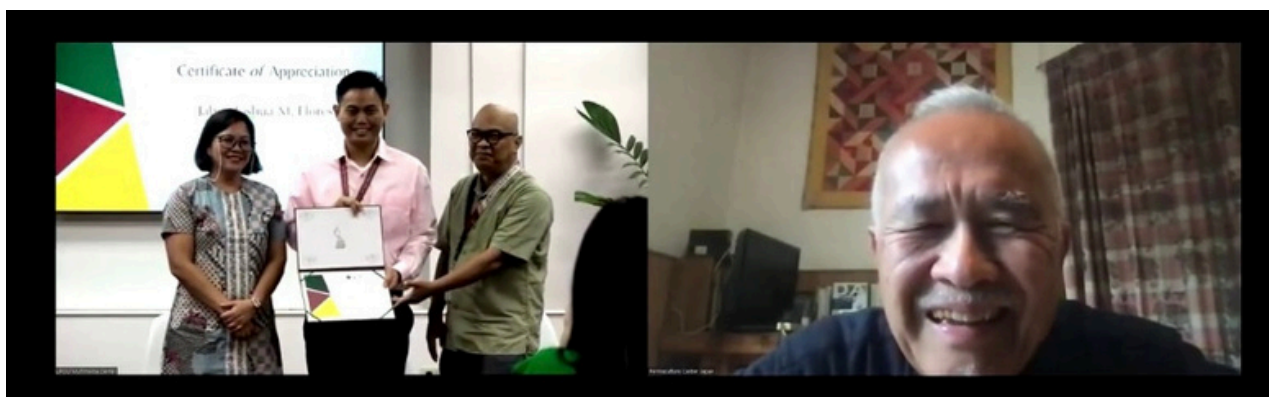
He holds a Bachelor of Science Major in Marine Science degree from the University of the Philippines a Master of Marine Affairs degree from the University of Washington.

He is presently enrolled in the online program entitled "Appraisal, Institute of Canada, Accredited Appraiser Canadian Institute" of the AIC and the University of British Columbia.

His research interests cover the areas of coastal management, decision analysis, real estate appraisal and investment, and sustainable shared growth.

E-Mail: cesar.luna@upou.edu.ph

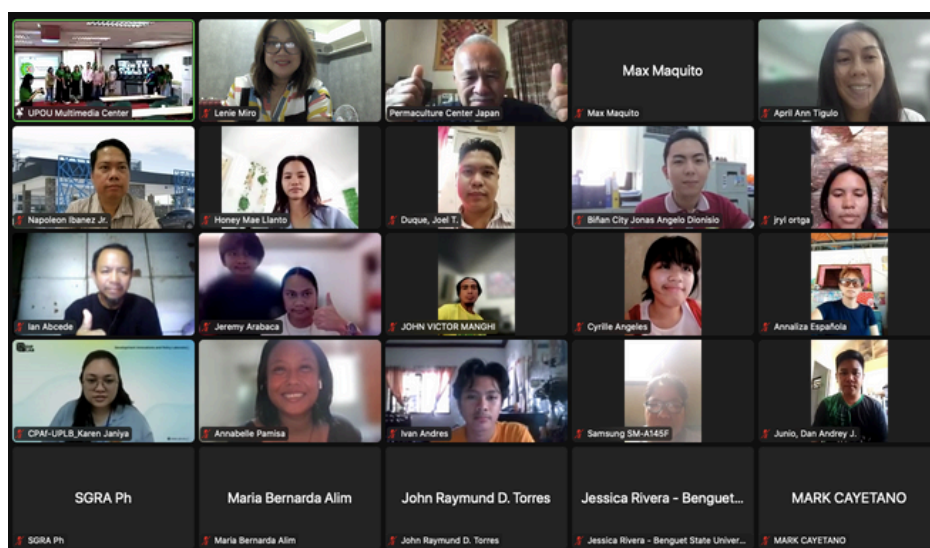
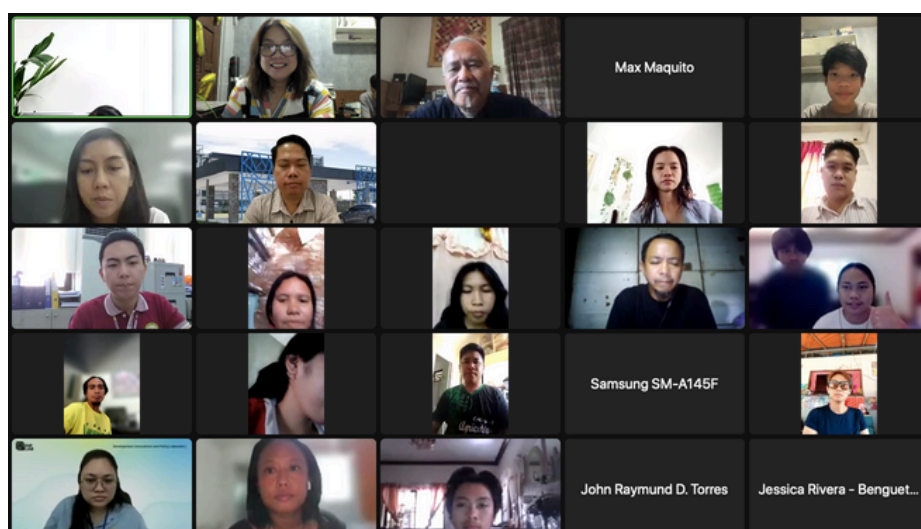
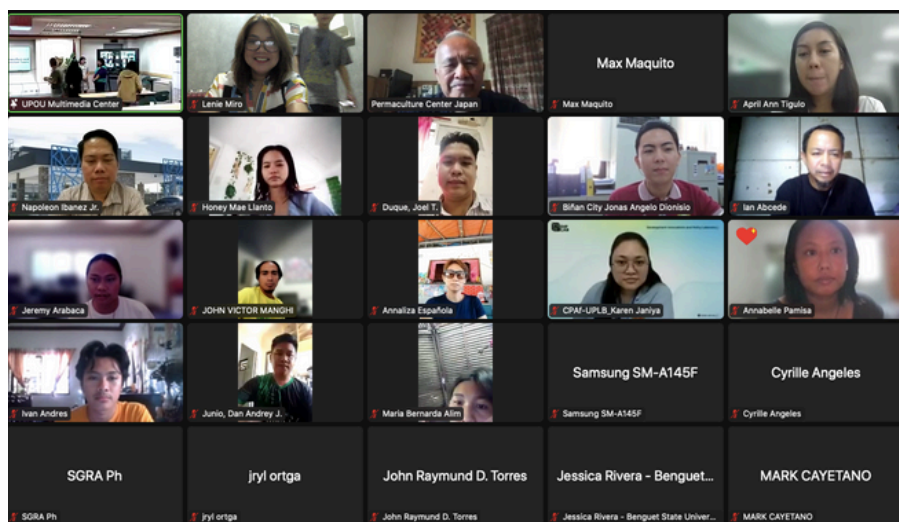
GALLERY



GALLERY



GALLERY



GALLERY



**Honor and Excellence in
Public Service!**

NEXT STEP



Source: SGRA website (see QR code)

THE 7TH ASIA FUTURE CONFERENCE
第7回アジア未来会議

REVITALIZATION AND RECONNECTION
再生と再会

AUGUST 9 (FRI) ~ 13 (TUE), 2024
CHULALONGKORN UNIVERSITY
BANGKOK, THAILAND
LANGUAGE: ENGLISH, JAPANESE

CALL FOR PAPERS
[HTTPS://WWW.AISF.OR.JP/AFC/2024](https://www.aisf.or.jp/afc/2024)
(OPEN ON MAY 1, 2023)

The Asia Future Conference aims to provide a platform for researchers and scholars who have studied in Japan or who are interested in Japan to meet and discuss the future of Asia. The AFC is interdisciplinary at its core and encourages diverse approaches to global issues. The AFC is not a conference for a specific field of study, so please try to make your presentation comprehensible to a general public.

HOST: ATSUMI INTERNATIONAL FOUNDATION SEKIGUCHI GLOBAL RESEARCH ASSOCIATION (SGRA)
主催: 公益財団法人澁美国際交流財団関口グローバル研究会(SGRA)

CO-HOST: JAPANESE SECTION, CHULALONGKORN UNIVERSITY
共催: チュラロンコーン大学文学部東洋言語学科日本語講座

ACKNOWLEDGEMENTS

Behind-the-Scene Assistance

- Karen Janiya
 - CPAf/UPLB
- Lenie M. Miro
 - SGRA PH



**We thank you for your
continued support in our efforts
to contribute to Sustainable
Shared Growth.**



©SEKIGUCHI GLOBAL RESEARCH ASSOCIATION MAY 2024

CHIEF EDITOR | MAX MAQUITO
maquito.uplb@gmail.com

ASSOCIATE EDITOR | LENIE M. MIRO
sgraphil@gmail.com

**SUSTAINABLE
SHARED GROWTH
SEMINAR #41
REPORT** 