

SUSTAINABLE SITES

Minerva C. Rosel, uap, piep




Sample Rating


Sound Site Selection	Prereq	
Site Feasibility	T	
Community Continuity	T	
Building Bulk	T	
Redevelopment of Built-up Sites	T	
Access to Public Transportation	T	
Pedestrian Provisions: Bicycle Storage	T	
Pedestrian Provisions: Shower & Locker Rooms	T	
Pedestrian Provisions: Covered Walkways	T	
Maximum Parking Capacity	T	
Site Development: Maximize Open Space	3	
Neighborhood Daylight & Natural Ventilation	T	
Site Potential for Renewable Energy	T	
Enhancing Site Ecology	T	
Preserving Biodiversity	T	
Total Possible Points:		16

1. PLANNING
2. PEDESTRIAN
3. FOOT PRINT
4. HARVEST
5. PRESERVE

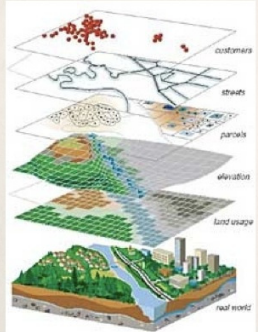
1. PLANNING



FLOOD WAY



FLOOD PLAINS





FEASIBILITY STUDY
SITE ANALYSIS
SECTORAL APPROACH
PLANNING LAWS & STANDARDS

Urban Sprawl

Production Protection



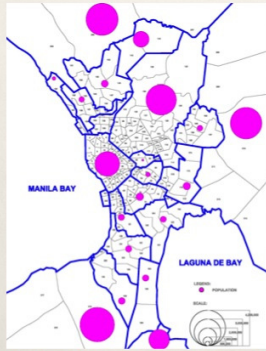
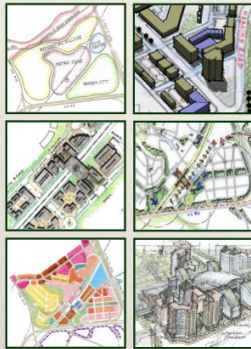



Natural occurrences become disasters ONLY when settlements are involved ...



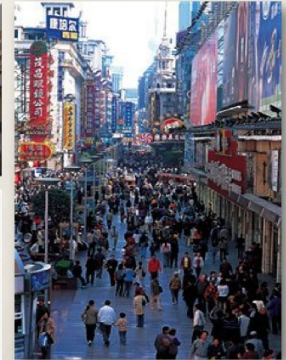
CHERRY HILLS SUBDIVISION, 1999

Think ahead...



...look at the BIG picture!

2. PEDESTRIANIZATION



Have a bias FOR commuters

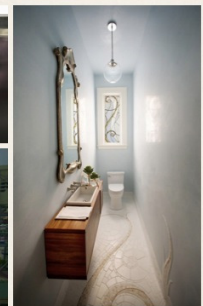
DRINKING STATIONS



COVERED WALKWAYS



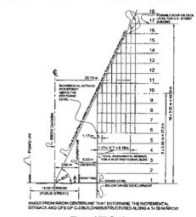
PRIVACY TO FRESHEN UP



3. BUILDING FOOTPRINT



The National Building Code of 2005



NOTE: SEE FIGURE VIII.20, RULE VII FOR RELATED REAR AND SIDE INCREMENTAL SETBACK AND OFS OF C-3 BUILDINGS STRUCTURES.

Height of Building (FROM WIDTH - FEET)	Front (Feet)	Side (Feet)	Rear (Feet)
50.00 & above	5.00	5.00	5.00
25.00 to 50.00	5.00	5.00	5.00
25.00 to 24.00	5.00	5.00	5.00
15.00 to 24.00	5.00	5.00	5.00
Below 15.00	5.00	5.00	5.00

NOTE: About Line Buildings/Structures in R-1 use may be considered a commercial development if it substantially percentage of the site is commercial.

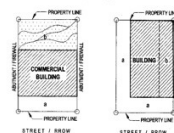


Figure VIII.12.



Figure VIII.14.

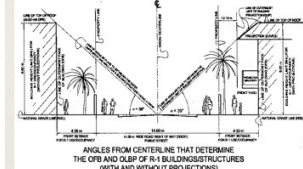


Figure VIII.15.

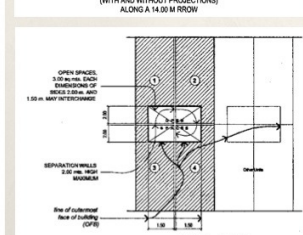
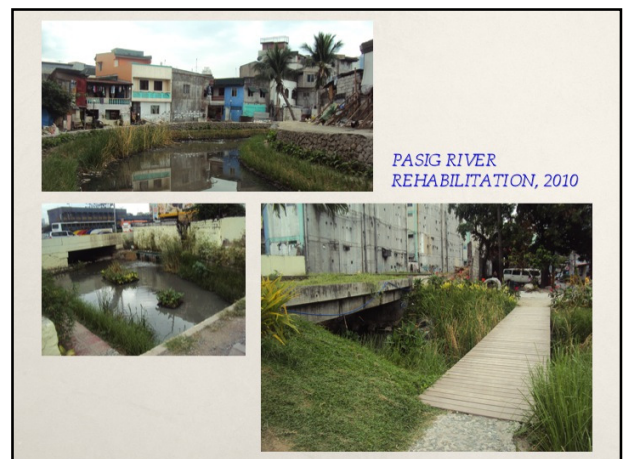
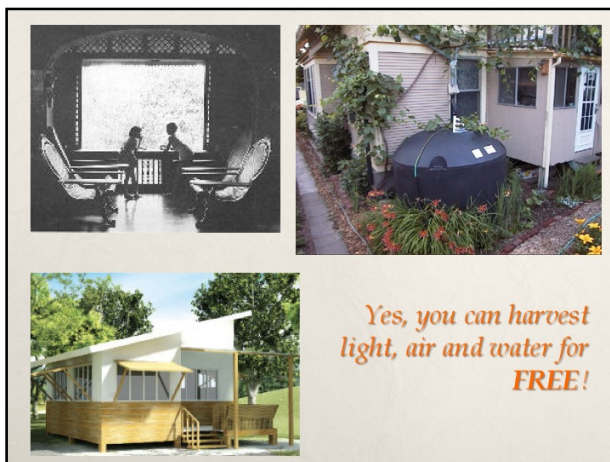
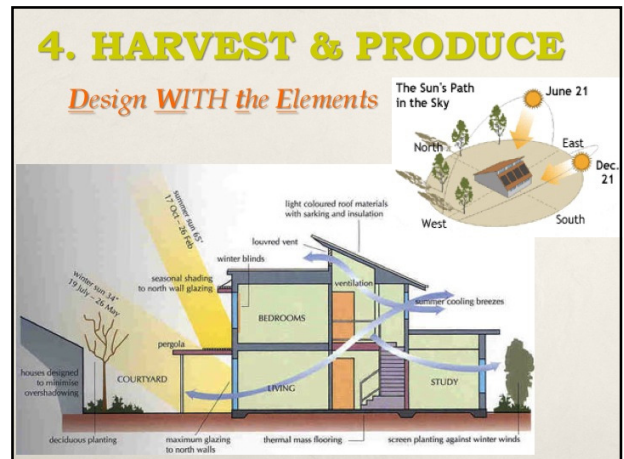
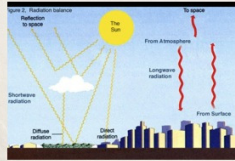


Figure VIII.16.





Reduce the urban heat island effect



SITE ? Real Property

STEWARDSHIP

Thank you!!!