

Atsumi International Foundation

Aiming for Realization of Good Global Citizens



Sekiguchi Global Research Association

www.aistf.or.jp/sgra/



Atsumi International Foundation

Greetings

The Atsumi International Foundation was established in 1994, in accordance with the wishes of my late husband, Takeo Atsumi. The Foundation supports foreign students who come to Japan from all over the world aiming to earn their doctoral degrees from Japanese graduate schools. In an effort to further develop the Foundation's original mission, we also foster international exchange through the Sekiguchi Global Research Association (SGRA), a scholarly network named after the neighborhood in Tokyo where our offices are located. SGRA's mission is to provide a platform for scholars who have studied in Japan so that their voices may be transmitted from Sekiguchi to the the rest of the world. More than twenty years have passed since its founding, and our network has grown within Asia and around the world, even hosting large-scale international symposia such as the Asia Future Conference. We would like to continue SGRA's activities with the goal of "Realization of Good Global Citizens." I am grateful for your continued support and cooperation.



Itsuko Atsumi
Chairman of the Board

Purport of Establishment



Takeo Atsumi (1919-1993)

Recent development in transportation and communication technology have allowed greater numbers of people to travel the world and keep themselves informed up to the minute of events around the globe. We must now recognize ourselves not only as citizens of one country but also as global citizens. As others have suggested, Japan, now an economic powerhouse, can do more to assert itself and play a larger role on the global stage.

The Atsumi International Foundation was established at the behest of Takeo Atsumi, Honorary Chairman of Kajima Corporation, who passed away in 1993, in order to promote a greater sense of Japan's role in the process of globalization. The Foundation provides financial assistance to foreign students of superior academic ability to further their studies at graduate schools in Japan. The hope is that by coming to Japan students will not only grow as scholars but benefit also through exposure to Japan's rich culture heritage.

It is hoped that the creation of the Atsumi International Foundation will further Mr. Atsumi's efforts to promote international exchange, and that helping young people to better understand the world in which they live will serve as a step toward world peace.

(April 1, 1994)

Two Major Nonprofit Programs of the Atsumi International Foundation

The Atsumi International Foundation operates two major programs: a Scholarship Program and International Exchange Program (SGRA).



International Exchange Program

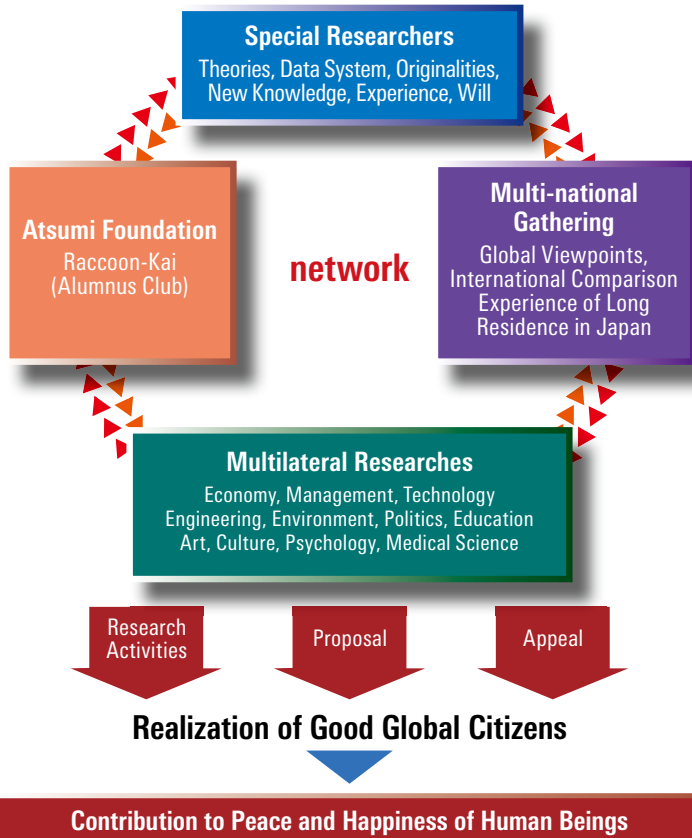


Aiming for Realization of Good Global Citizens

What is SGRA?

The Sekiguchi Global Research Association (SGRA) is a division of the Atsumi International Foundation. At its core is a community of non-Japanese researchers who come from all over the world to conduct advanced studies in Japan and obtain doctoral degrees from Japanese graduate institutions. SGRA identifies issues related to globalization and seeks to disseminate research results to a wide audience through forums, reports, and the internet. Through wide-ranging research activities that are inherently interdisciplinary and international, SGRA's aim is to reach society at large rather than a specific group of specialists. The essential objective of SGRA is to contribute to the realization of responsible global citizens.

Special Features of SGRA



Asia Future Conference (AFC)



Asia Future Conference aims to provide a platform for researchers who have studied in Japan and young researchers and students who are interested in Japan to meet and discuss about the future of Asia from interdisciplinary and international viewpoints. We have hosted AFC in Asian cities every other year since 2012. Through AFC, SGRA aims to build a worldwide "Wisdom Network."



Joint Projects with Overseas Research Institutes

■ Japan-Taiwan Asia Future Forum

We jointly host forums with universities in Taiwan every year about various issues in the social science or humanities from the viewpoints of Japan, Taiwan, and trans-border Asia.

■ SGRA China Forum

With universities and research institutes in China, we co-host forums every year to rethink the histories of multidimensional cultural exchange or to overview the dynamic exchange in East Asia in the past, at present, and in the future.

■ Japan-Korea Asia Future Forum

We co-host forums with the Center for Korea Future Human Resource Studies, exchanging researchers every year on a rotating basis. This forum focuses on various issues in the social sciences and humanities from the viewpoints of Japan, Korea, and other Asian countries with multiple perspectives.

■ Japan-Philippines Shared Growth Seminar

We host seminars every year to discuss various issues in the Philippines on the basic theme "Shared Growth," in which economic growth and its distribution are achieved simultaneously.



SGRA Overview

The activities of SGRA are managed by the Steering Committee, Research Teams, Project Teams and Editing Teams, and are financially supported by donations from corporations and individuals, grants from various organizations to our projects, as well as Atsumi Foundation budgets.

1. The Steering Committee makes decisions about important matters regarding the management of this association.
2. The Steering Committee selects research categories which align with SGRA's goals, organizes project teams, and implements projects.
3. Project teams consist primarily of SGRA members, who may request non-SGRA members to join if necessary, to implement and promote SGRA projects.
4. A Project Team is formed as an organizing committee of an individual project.

SGRA is an abbreviation of Sekiguchi Global Research Association. It dispatches the voices of our members about global issues to the world from the place named "Sekiguchi" in Tokyo's Bunkyo Ward, where Atsumi International Foundation Office is located.

Research Exchange Activities in Japan like SGRA Forum

We hold roundtable conferences and/or forums on the following eight categories.

■ Globalization and Global Citizenship

An awakening to the reality of "Consciousness of Global Citizenship" is becoming more and more necessary. We deal with this notion and its disposition.

■ Asia Initiative

The past century has seen the rise of a prosperous Asia. We explore multiple issues while reflecting on history—how Asia should be now, how to build Asia fifty or one hundred years from now, and how to solve various problems from global perspective.

■ Environment and Energy

In both technology and society, we confront the issue of the environment and energy from various fields, viewpoints, and directions, and propose solutions with new ideas based on practical technologies.

■ Technology and Human Society

Technology is progressing rapidly, and its negative impact on society is also becoming apparent. From the viewpoint of "Harmony between the Humanities and Sciences," we discuss how technology can promote harmonious progress of human beings.

■ Development of East Asian Human Resources

In the era of internationalization and information, we discuss human development strategies of Asian countries. We also deal with issues such as technology transfer, cultural frictions, and the educational divides that accompany human movement across the borders.

■ East Asian Security and World Peace

East Asia in the twenty-first century requires mutual understanding, reliance, and frameworks for peace. We tackle the following issues: what are main hindrances to mutual reliance and understanding, and what is the path towards regional security and peace?

■ Religion and Modern Society

The role of religion has grown in modern society. We tackle issues such as the meaning of religion in the modern world and the role it can play. Religion and peace are examined from a global perspective.

■ Gender and Society

Gender affects everything from the social system to our individual lifestyles. We analyze modern societies, histories, literatures, and the mass media from the perspective of gender to study the power structure and mechanism of exclusion in our societies. We discuss not only gender but also race, nationality, social status, and disability status.



SGRA Study-Tours and SGRA Café

SGRA organizes "SGRA Study Tour in Fukushima" and SGRA Café.



Support for SGRA Sessions

We provide support for SGRA members hosting sessions at AFC (Asia Future Conference) and EACJS (East Asian Consortium of Japanese Studies). We encourage Atsumi scholars and alumni to organize sessions, and, when applications are approved, their participation fee will be subsidized.

Other Supporting Activities

JAANUS:

We provide technical support for the online dictionary of Japanese Architectural and Art Net Users System (JAANUS).

<http://www.aisf.or.jp/~jaanus/>

Free Subscription of SGRA *Kawaraban*

An email magazine every Thursday with essays by SGRA members and information about SGRA events. Japanese only. You can read SGRA *Kawaraban* free of charge and register your address at the following webpage :

http://www.aisf.or.jp/mailmaga/entry/mailing_form/



Atsumi Scholarship Program

The Atsumi International Foundation offers its scholars the chance to meet and interact with people active in different fields. For this reason, scholarship payments are delivered in person, and the Foundation maintains close communication with scholarship recipients. We believe this type of personal communication helps establish a worldwide network of scholars even after individuals'

scholarship periods. We also believe that, no matter how humble its effects may be, the Atsumi network should play a role in the development of global harmony. We thus welcome scholarly research that may contribute to the "Harmonious Development" of people, society, and nature.

Overview

■ Application qualifications (all the following conditions must be satisfied)

1. Applicants must maintain citizenship in a country other than Japan, be enrolled in a doctoral program in Japan, and be on track to earn their Ph.D. at the end of the scholarship period. Also eligible are applicants who remain enrolled as researchers after completion of the required period as a regular student, or students of non-Japanese graduate schools who are affiliated with Japanese graduate schools for doctoral research.
2. An applicant's graduate program (or research office) and place of residence must both be within the Kanto region (this includes Tokyo, Kanagawa, Saitama, Chiba, Ibaraki, Tochigi, and Gunma Prefectures).
3. Applicants must demonstrate proficiency in Japanese language. All application materials and interviews are in Japanese.
4. Applicants must demonstrate interest in international understanding and friendship and be willing to participate enthusiastically in activities sponsored by the Foundation.

■ Stipend

The stipend will be 200,000 yen per month. The scholarship will be awarded for one year and cannot be extended.

■ Application Procedure

Application forms are available after July 1 at the Atsumi Foundation office or at financial aid and/or exchange program offices at graduate schools. Materials can also be printed out from the Atsumi Foundation website. Completed applications are accepted in September.

■ Selection Process

Following a preliminary review of application materials and interviews at the Foundation office, final selections are based on a more extensive review of application materials and a final interview with the selection committee. Applicants and their schools will be informed of the results in late November.

Students Support and Alumni Activities (Raccoon-kai)

Stipends will be paid to scholarship recipients at monthly group gatherings or individual interviews, at which students report on his or her scholarly activities and student lives. Additionally, several times each year the Foundation hosts social gatherings for all current and former Atsumi scholars, the Foundation's directors and advisors, and members of the selection committee. Each summer, scholarship recipients are invited on a short trip. A presentation of research is held at the end of each academic year during which each scholarship recipient gives a presentation of the results of their research during the scholarship period.

The alumni group of the Atsumi Scholarship program is called "Raccoon-kai," after the *tanuki* (raccoon-dogs) painted by Atsumi Takeo. There are also local Raccoon-kai in Seoul, Beijing, and Taipei.



Toward the Future of Asia—My Proposal

(Best Papers of the Asia Future Conference)

A compilation of the best papers from the Asia Future Conferences, which are held every other year in major Asian cities. We send them not only to SGRA members but also to international centers of Japanese universities, major libraries, foreign universities, and centers for Japan studies. They can also be purchased through online book stores.



SGRA Report

Reports of the SGRA Forum and academic essays by SGRA members are published as SGRA Reports. Paper versions of the Reports are published and sent to SGRA Supporting Members and Special Members, as well as international centers of Japanese universities and foreign students' dormitories, and Japan centers of foreign universities. PDF versions can be downloaded from the SGRA homepage for free. Some reports are translated in English, Chinese, or Korean.

<http://www.aisf.or.jp/sgra/active/report/>



Collection of Essays

We have published three volumes of essays by SGRA members commemorating the fifth, tenth, and fifteenth anniversaries of the Atsumi Foundation. If you like to purchase them, please contact the Atsumi Foundation office.



Atsumi International Foundation Sekiguchi Global Research Association

3-5-8, Sekiguchi, Bunkyo-ku, Tokyo 112-0014
 TEL: 03-3943-7612
 FAX: 03-3943-1512
 E-mail: office@aisf.or.jp
 homepage: <http://www.aisf.or.jp>
 homepage (SGRA): <http://www.aisf.or.jp/sgra/>

Request for Donations

Donation to Public Interest Programs

Atsumi International Foundation operates Public Interest Programs with funds earned from the endowments of Atsumi Foundation and donations from corporations and/or individuals. However, due to the prolonged economic depression and low interest rate, we request your support.

● Suggested Contribution: (Contributions of any size are welcomed)

Corporations: ¥300,000

Individual: ¥100,000

*The Annual Report will be sent to the donor.

Donation to International Exchange Programs (SGRA)

SGRA is operated with funds earned from the endowments of the Atsumi Foundation, donations from corporations/individuals, grants from various organizations, and other income. SGRA programs are managed by the Steering Committee, Research Teams, Project Teams, and Editorial Committee. As SGRA activities have grown, we would like to ask your patronage for our activities and for the broadening of our network.

● Suggested Contribution (Contributions of any size are welcomed)

Corporation ¥50,000

Individuals: ¥10,000

*SGRA Reports, Annual Reports, and invitations to SGRA Forum will be sent to the donor

Payee

Mitsui-Sumitomo Bank (Mejiro Branch) Ordinal A/C 6499525
 Atsumi Kokusai Koryu Zaidan

Post Office A/C 00170-5-392039
 Atsumi Kokusai Koryu Zaidan

Tax Exemption for Donations

Atsumi International Foundation is acknowledged as a Public Interest Incorporated Foundation (Koeki Zaidan Hojin). Therefore, a donation over ¥2001 will get a certain amount of tax exemption from income/corporation tax. When you make donation, please apply deduction or tax credit at the final income tax return for the year. As to residence tax, it all depends on local government (Tokyo can be applied).

