

the 6th AFC Pre-Conference

Photos of the Day

2021.8.26

Morning Session



Morning Session



Afternoon Session Award Ceremony



Afternoon Session

BP Session 1



Afternoon Session

BP Session 2

CONCLUSIONS


- In this research, we studied the relationship between openness of a society, as represented by the streams of immigration, and innovation and knowledge generation, as represented by the entrepreneurship
- We have defined two research hypotheses, that comprised the role that migration has as a promotor of knowledge generation and innovation or, instead, as a promotor of wealth inequality in the hosting country
- We have further provided empirical testing of these two hypotheses, on the basis of macroeconomic data associated with the variables of immigration, on one hand, and of entrepreneurship and income inequality on the other
- There is some support to the hypothesis that immigration produces wealth inequality; and, at the same time, that immigration also generates knowledge and promotes entrepreneurship in the hosting country
- The most significant limitation of this research consists in the very coarse-grained resolution of the data concerning the bilateral immigration



Research background

Rainwater has been widely used to alleviate the pressure on water supply from centralized main water plants. Rainwater harvesting systems (RWHs) are derived for supplying rainwater to buildings as decentralized water reuse systems to substitute non-potable water because some water uses do not rely on high-quality water. However, the water-saving efficiency of RWH is limited by the precipitation and the rainwater capture areas of buildings and the economic benefits brought of RWHs in some building types cannot offset the investment cost. Therefore, there are still several regions that still lack confidence in the economic benefits of spreading RWH to cities.

Public buildings have a larger scale of non-potable water consumption and more non-potable water uses. Installing water reuse systems in campus buildings is more feasible than other building types. However, the evaluation of installing RWH in this type of building is still in its infancy. Therefore, the motivation of this work is to encourage the use of RWHs in the context of public buildings, as an integral part of sustainable water management. This study aims to evaluate the feasibility of installing a large-scale RWH on campus in Japan.



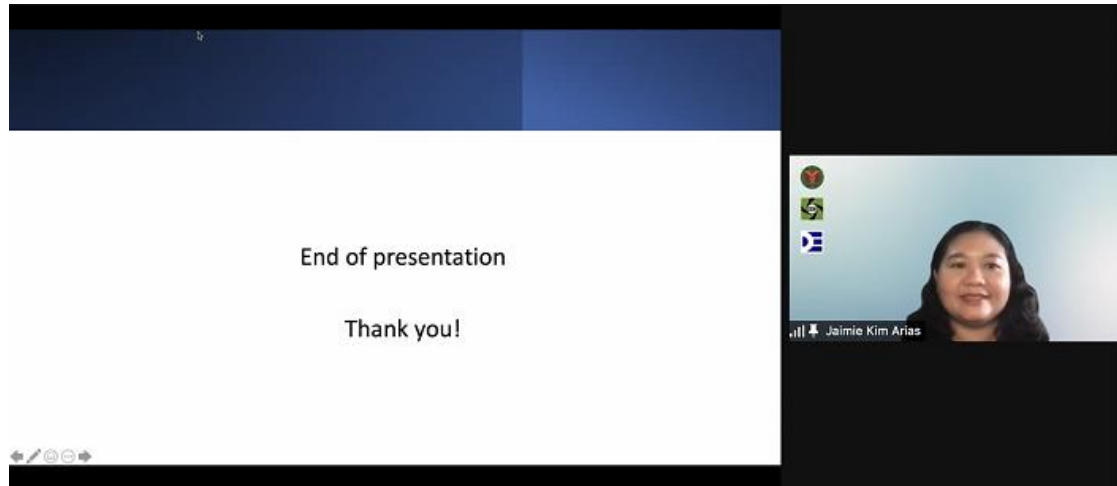
Wei Lun Chen

Afternoon Session

BP Session 2


End of presentation

Thank you!




A Zoom meeting interface. The main window displays a white slide with the text "End of presentation" and "Thank you!". In the bottom right corner, there is a video feed of a woman with dark hair, identified as "Jaimie Kim Arias". The Zoom control bar is visible at the bottom left of the slide area.

Finding a Better Normal

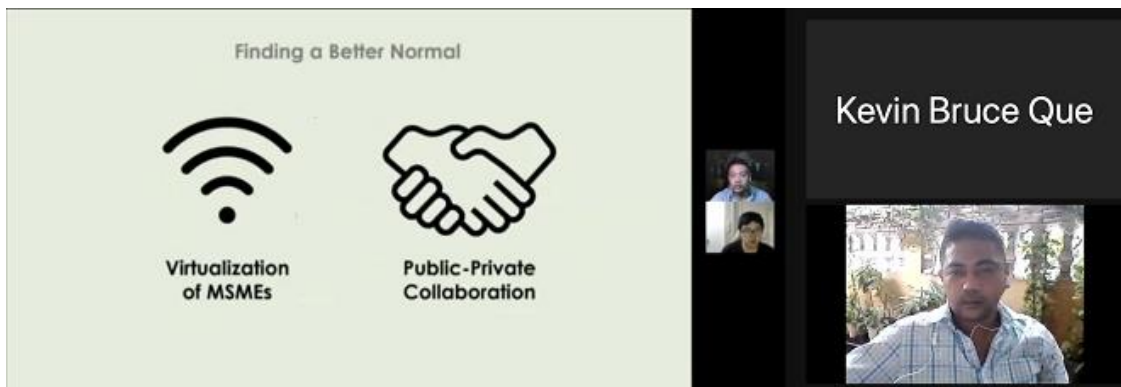


Virtualization of MSMEs



Public-Private Collaboration

Kevin Bruce Que



A Zoom meeting interface. The main window displays a slide titled "Finding a Better Normal" with two icons: a Wi-Fi symbol labeled "Virtualization of MSMEs" and a handshake symbol labeled "Public-Private Collaboration". On the right side, there is a name tag for "Kevin Bruce Que" and a video feed of a man in a plaid shirt. Two smaller video feeds of other participants are visible in the top right corner.



A grid of nine Zoom meeting participant video feeds. The participants are arranged in three rows and three columns. Each video feed includes a small yellow hand icon in the top left corner, indicating that the participants have their hands raised. The participants include a woman with long dark hair, a man in a light blue shirt, a woman with long dark hair, a man in a dark suit, a woman with dark hair, a woman with glasses, a man in a plaid shirt, a man in a white shirt and glasses, and a man in a white shirt and glasses.

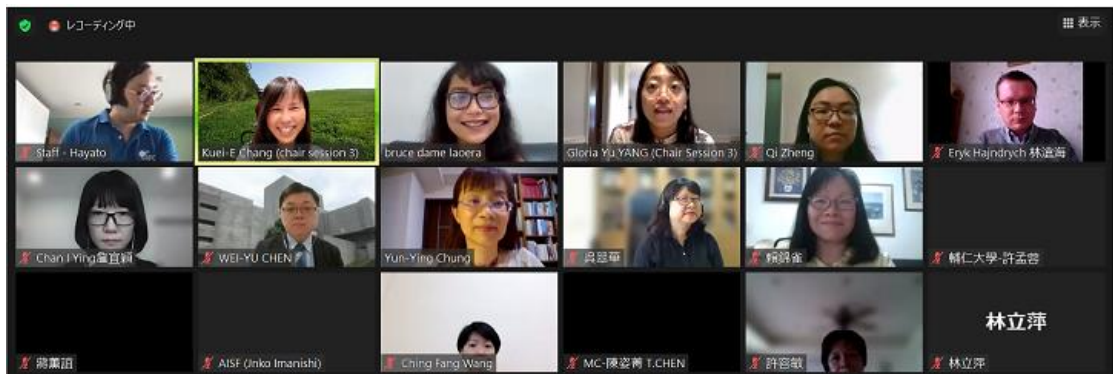
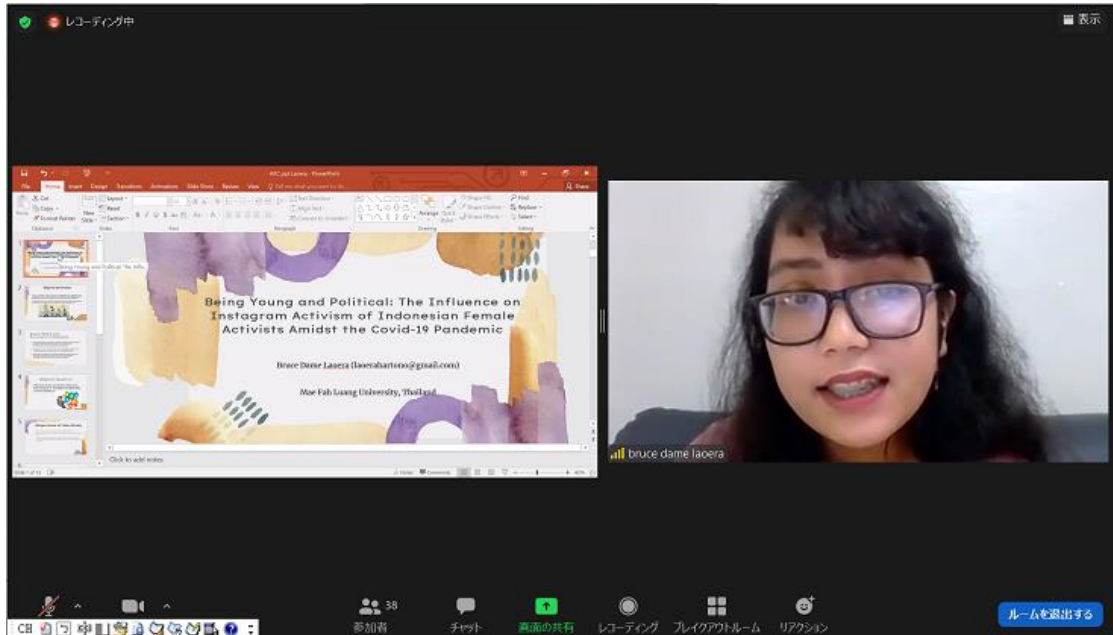
Afternoon Session

BP Session 3



Afternoon Session

BP Session 3



Afternoon Session


BP Session 4

Digital Sound Off

立憲平和主義の可能性：
パラダイムシフトとしての日
本国憲法

The Possibility of Constitutional Pacifism:
A Paradigm Shift of Constitutionalism

陳憲祐 Chen, Wei-yu
早稲田大学大学院法学研究科公法専攻博士課程院生



陳憲祐 Chen, Wei-yu


The 6th Asia Future Conference
Building a Future Asia - Solving Problems Together

**Attracting foreign angel investment
for startup development in Vietnam**

Dang Thanh Dat, Nguyen Thi Kim Anh
Vietnam National University, Hanoi

26th August, 2021

The 6th Asia Future Conference
Pre-conference
International Asia View




陳丁 Thanh Dat

Digital Sound Off Recording...

**Wealth, Income Distribution, and
the Role of Institution:**
Concept and Practice of Syariah Banking in Several
Countries

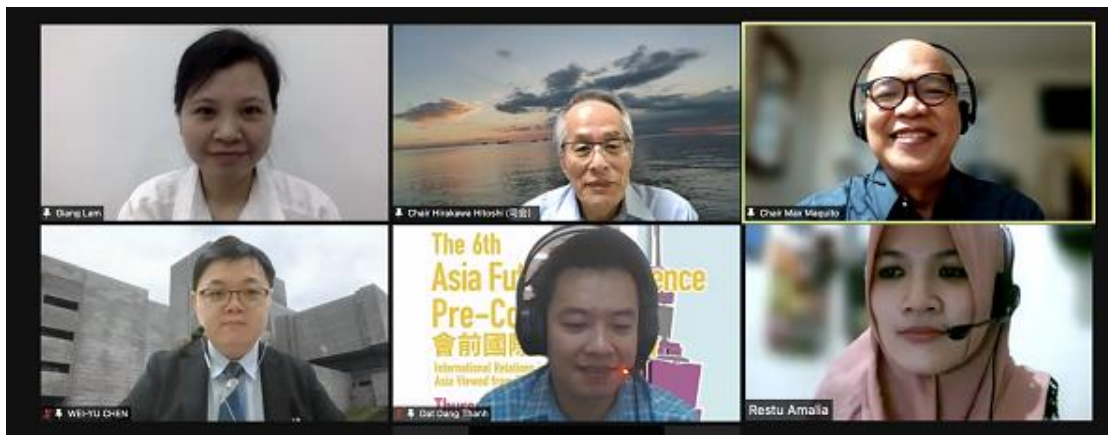
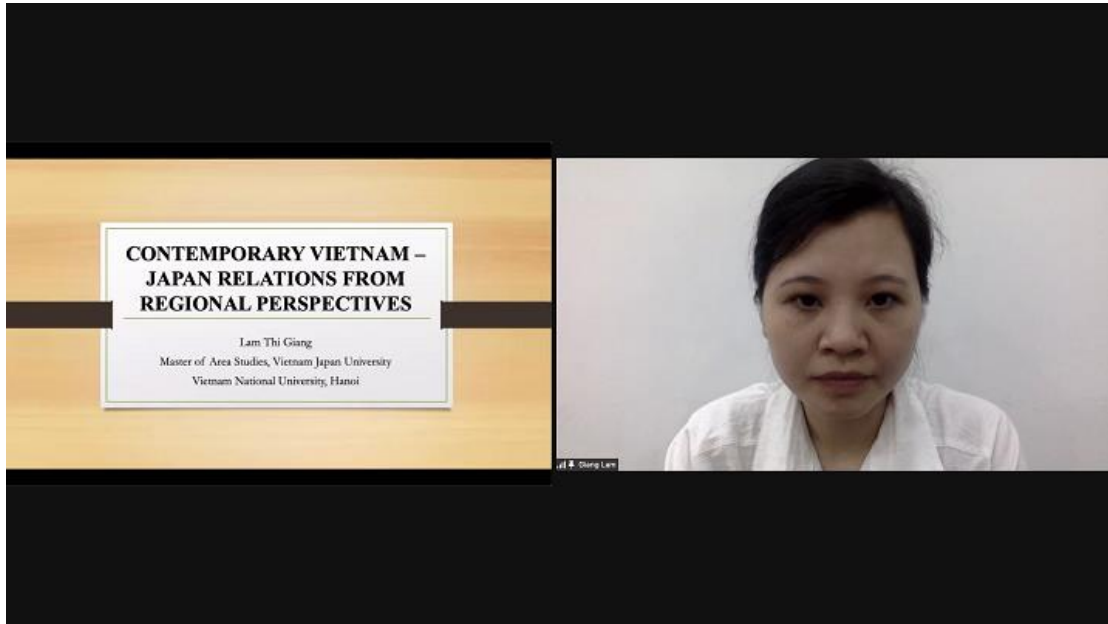
Restu Amalia
Widnu Agung Baroto



Restu Amalia

Afternoon Session

BP Session 4




Afternoon Session

BP Session 5

SMART CITIES IN ASIA AND THE CHALLENGES TO THE EMERGENCE OF A SMART CONTINENT

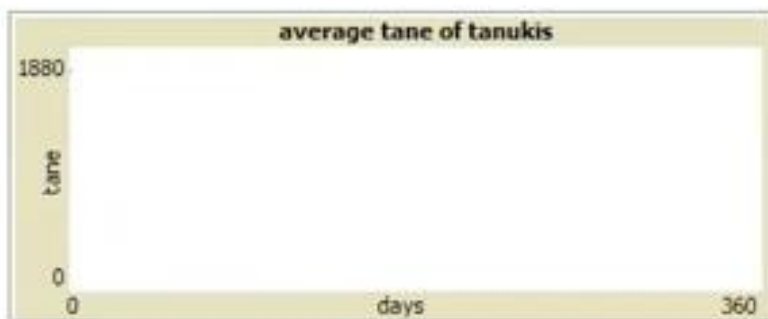

GABRIELE DE LUCA,
RESEARCHER,
DEPARTMENT FOR E-GOVERNANCE AND ADMINISTRATION,
DANUBE UNIVERSITY KREMS, AUSTRIA
GABRIELE.DELUCA@DONAU-UNI.AC.AT



ASIA FUTURE CONFERENCE

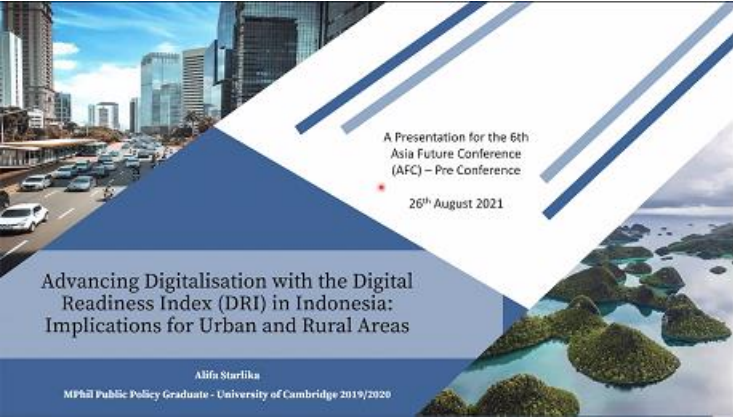
Bank Stability and Macro Stress Testing of the Top 24 Universal and Commercial Banks in the Philippines

• Michaela Nicole Meriño, Jovi Dacanay
August 26, 2021



Afternoon Session


BP Session 5



A Presentation for the 6th Asia Future Conference (AFC) – Pre Conference
26th August 2021

Advancing Digitalisation with the Digital Readiness Index (DRI) in Indonesia: Implications for Urban and Rural Areas

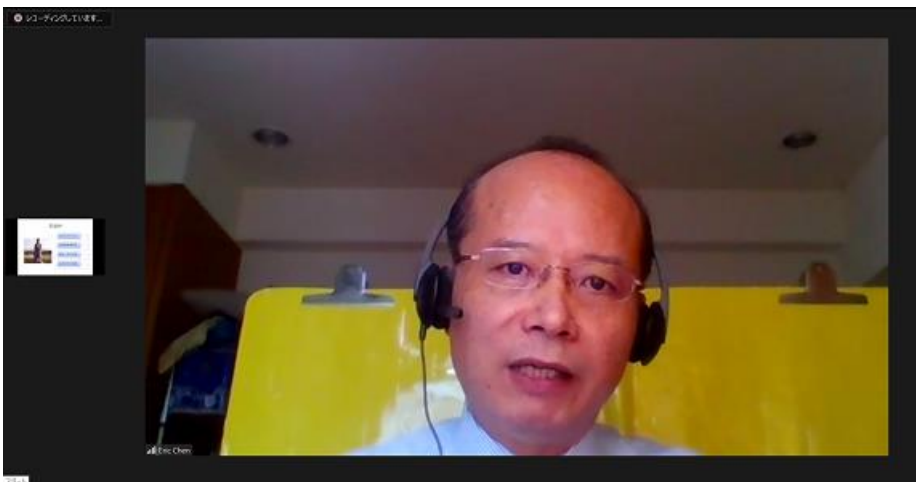
Alifa Starlika
MPhil Public Policy Graduate - University of Cambridge 2019/2020



The 6th Asia Future Conference
Building a Future Asia - Solving Problems Together

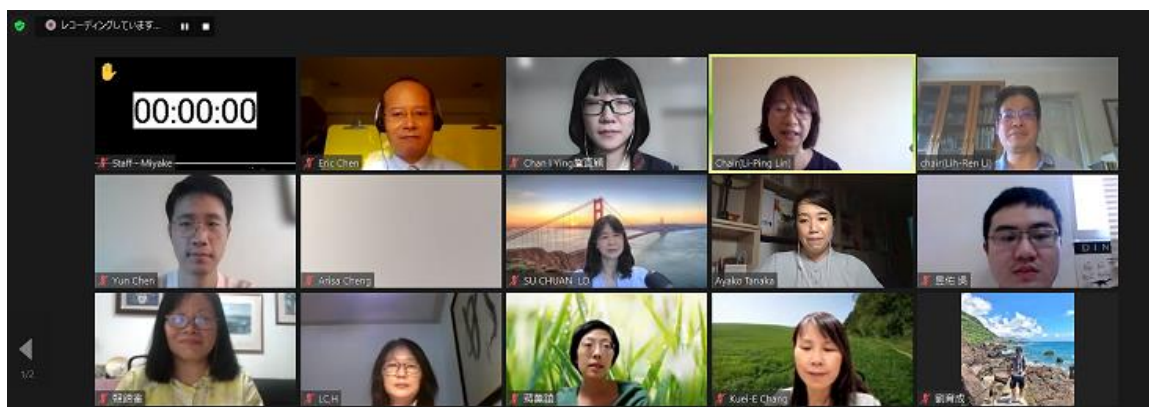
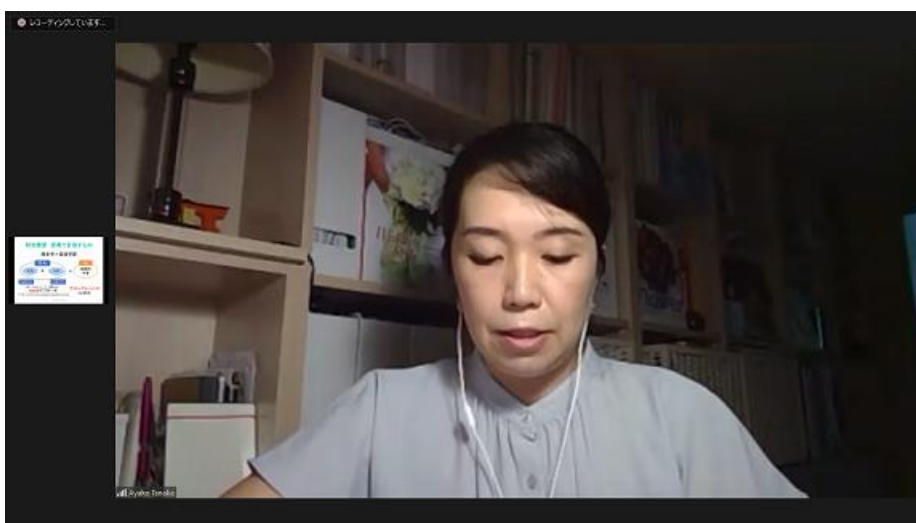
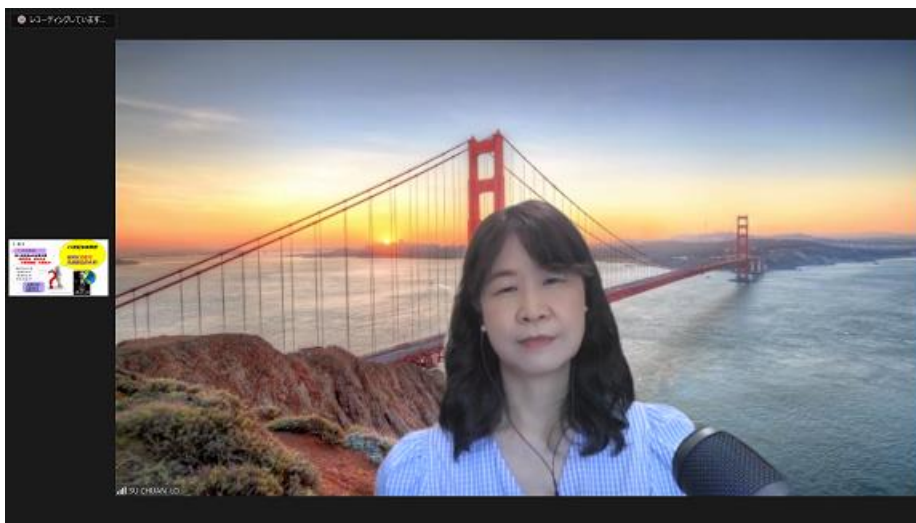
Afternoon Session

BP Taiwan Session



Afternoon Session

BP Taiwan Session



Afternoon Session

Closing Ceremony

